

NOTES: UNLESS OTHERWISE SPECIFIED

1. INTERPRET DRAWING IN ACCORDANCE WITH ASME Y14.5-1994.

2. PART SUPPLIED ON A CONTINUOUS REEL AS SHOWN, 25,000 ±15% PINS PER REEL. FEEDER COMPATIBLE SPLICES PERMITTED, 2 SPLICES MAX PER REEL.

3. COMPLIANT TIPS ARE BARE AT CUT-OFF.

4. .010 [0.25] MAX RADII AND FILLET.

5. ASSEMBLY DIMENSIONS ARE MEASURED IN A RESTRAINED STATE.

6. HEADER SIZES CUT FROM A REEL ARE PACKAGED IN THERMOFORMED TRAY.

7. CONSULT AUTOSPICE FOR INSERTION TOOLING.

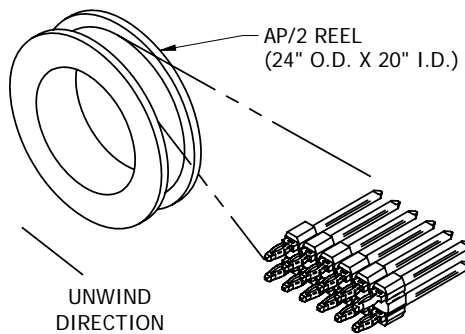
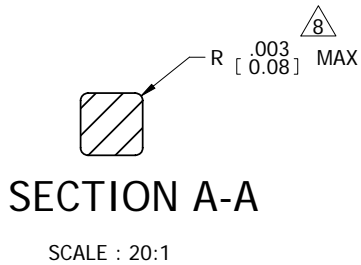
8. PIN TIP CONFORMS TO EWCAP -001.

9. RECOMMENDED .062" THICK PC BOARD HOLE:

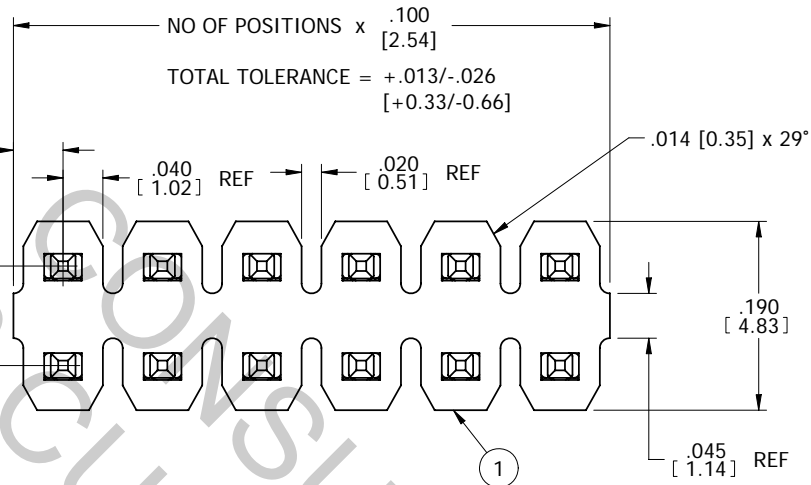
DRILLED HOLE - Ø .0453±.0010 [Ø 1.151±0.025]
COPPER PLATED - Ø .0410±.0020 [Ø 1.041±0.051]
(HASL) TIN/LEAD PLATED - Ø .040±.003 [1.02±0.08]

DRILLED HOLE - Ø .0453±.0010 [Ø 1.151±0.025]
COPPER PLATED - Ø .0410±.0020 [Ø 1.041±0.051]
NICKEL PLATED - Ø .040±.002 [1.02±0.08]
GOLD PLATED - Ø .040±.002 [1.02±0.05]

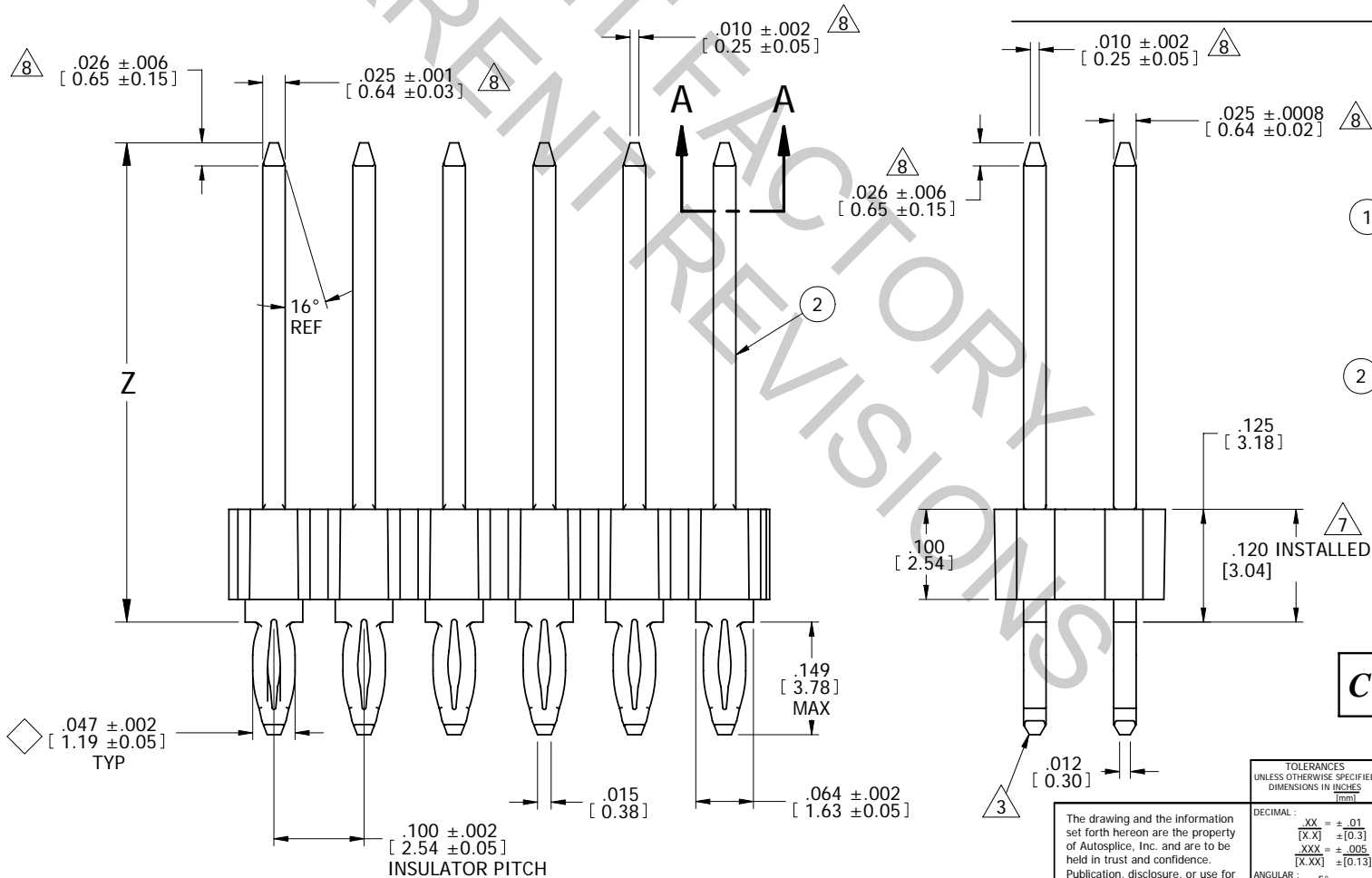
DRILLED HOLE - Ø .0453±.0010 [Ø 1.151±0.025]
COPPER PLATED - Ø .0413±.0020 [Ø 1.041±0.051]
SILVER PLATED - Ø .040±.002 [1.02±0.05]



REELED HEADER ORIENTATION



P/N 23-1047D12A3AA SHOWN



PART NO. / ORDERING CODE

TYPE
2 ROW .100 [2.54]
CENTERS

SO. PIN COMPLIANT

0.025 SQ
[0.64]

TOTAL NO. OF POS.

2 00 = CONTINUOUS REEL

6 CUT HEADER SIZES:
2 TO 40 POSITIONS
PACKAGED IN THERMOFORMED TRAY

FINISH

AA = .000040 [0.00102] MIN TIN/LEAD
(90/10) OVER .000050" [0.00127] MIN Ni
TT = .000040 [0.00103] MATTE TIN (LEAD
FREE) OVER .00080 [0.00203] Ni

DIMENSIONS

CODE	Z
A1	.419 [10.65]
A2	.437 [11.10]
A3	.531 [13.49]
A4	.604 [15.35]
A5	.585 [14.85]
A6	.384 [9.75]

ADDITIONAL PIN SIZES & LENGTHS UP
TO "Z"=1.575 [40.00] CAN BE MADE
UPON REQUEST

MATERIAL:

1 INSULATOR:

GLASS FILLED
THERMOPLASTIC POLYESTER,
FLAMMABILITY RATED: UL 94-HB
COLOR: BLACK

2 PIN:

COPPER ALLOY

FINISH:

SEE PART NO. / ORDERING CODE

CUSTOMER DRAWING

The drawing and the information set forth hereon are the property of AutosplICE, Inc. and are to be held in trust and confidence. Publication, disclosure, or use for any purpose not expressly authorizing in writing by AutosplICE, Inc. is prohibited.

TOLERANCES UNLESS OTHERWISE SPECIFIED DIMENSIONS IN INCHES [mm]	DECIMAL	XX = ±.01 [X.X] ±[0.3]	XXX = ±.005 [X.XX] ±[0.13]	ANGULAR: ± 5°
◆ DENOTES SPECIAL CHARACTERISTIC				

autosplICE®

AutosplICE, Inc.
10121 Barnes Canyon Rd.
San Diego, CA 92121-2725
858-535-1027

THIRD ANGLE PROJECTION
DRAWN BY Pete
ENGINEERED BY PVB

DATE 4-08-03
DATE 4-08-03

TITLE
AUTOHEADER™, 2 ROWS, .100 [2.54] CTRS
SIZE C
TSCM NO. OAE89
DRAWING NUMBER C23-1047
REVISION G

SCALE 8:1
CAD NO. C23-1047
MODEL NO. 23-1047.asm
SHEET 1 OF 1